

Link-Belt® HC-238B lifting crane capacities — open throat boom PCSA Class 12-798

Boom — 60" (1.52 m) wide, 54" (1.37 m) deep with open throat top section, 1 1/4" (35 mm) boom pendants, boom live mast, and boom midpoint suspension pendants as required.

Jib — 36" (0.91 m) deep, 30" (0.76 m) wide.

Counterweights — Refer to charts below.

Mounting — rubber tire mobile base: FMC, 8 x 4 drive, 270" (6.86 m) wheelbase, 11' 10" (3.61 m) wide.

Counterweights					
"A" upper		"AB" upper		"A" bumper	
Pounds	kilograms	Pounds	kilograms	Pounds	kilograms
30,000	13 608	60,000	27 216	11,400	5 171

Open throat boom + jib machine can **lift off ground** ① unassisted, without load ①.

Standard HC-238B must be equipped with the counterweight combinations below when indicated boom and boom/jib lengths are used.	Minimum/maximum boom or boom + jib lengths allowed.	On outriggers							
		Over rear				Over side			
		Boom		Boom + Jib		Boom		Boom + Jib	
		Feet	meters	Feet	meters	Feet	meters	Feet	meters
"A" upper and "A" bumper	Minimum Maximum	50 230	15.24 70.10	Not applicable		50 210	15.24 64.01	Not applicable	
"AB" upper and "A" bumper	Minimum Maximum	50 230	15.24 70.10	50 + 30 200 + 60	15.24 + 9.14 60.96 + 18.29	50 230	15.24 70.10	50 + 30 200 + 60	15.24 + 9.14 60.96 + 18.29
On tires ②									
"A" upper and "A" bumper	Minimum Maximum	70 170	21.34 51.82	Not applicable		70 140	21.34 42.67	Not applicable	

① Limited to 95% of available stability with machine standing level on firm supporting surface.

② Air pressure in tires to be 115 p.s.i. (793 kPa).

Machine **travel** with open throat boom or boom + jib, with no load ③.

Standard HC-238B must be equipped with the counterweight combinations below when the indicated boom or boom + jib lengths are used.	Minimum/maximum boom or boom + jib lengths allowed.	On tires ④							
		Jobsite moves at 1 m.p.h. (1.61 km/h), boom at 80° boom angle, upper facing rear only.				Jobsite moves at 5 m.p.h. (8.05 km/h) with boom horizontal over rear and supported with standard suspension, and boom live mast pinned in 30' (9.14 m) extended position.			
		Boom		Boom + Jib		Boom		Boom + Jib	
		Feet	meters	Feet	meters	Feet	meters	Feet	meters
"A" upper and "A" bumper	Minimum Maximum	50 230	15.24 70.10	Not applicable		50 150	15.24 45.72	Not applicable	
"AB" upper and "A" bumper	Minimum Maximum	190 230	57.91 70.10	160 + 60 200 + 60	48.77 + 18.29 60.96 + 18.29	80 140	24.38 42.67	50 + 60 110 + 50	15.24 + 18.29 33.53 + 15.24

③ Limited to 85% of available stability with machine on firm, level supporting surface.

④ Air pressure in front and rear tires to be 100 p.s.i. (690 kPa) for travel at 1 and 5 m.p.h. (1.61 and 8.05 km/h).

Note: Hook block may be carried only when attached to mounting.

Caution: This material is for reference only. Operator must refer to in-cab capacity plate to determine allowable machine lifting capacities and operating procedures.

HC-238B lifting crane capacities — open throat boom

Refer to Notes page 4.

Length	Boom					Capacities ①															
	Radius		Angle Deg.	Boom point height ②		"A" upper and "A" bumper counterweights								"AB" upper and "A" bumper counterweights							
	Ft.	m		Ft.	m	On outriggers ③				On tires (static)				On outriggers only ③							
			Over rear			Over side & 360° swing ③		Over rear		Over side		Over rear		Over side & 360° swing ③							
					Lbs.	kgs	Lbs.	kgs	Lbs.	kgs	Lbs.	kgs	Lbs.	kgs	Lbs.	kgs	Lbs.	kgs			
170' (51.82 m)	35	10.67	79.3	173'	9"	52.95	53.2*	24 1*	53.2*	24 1*	39.3	17 8	26.1*	11 8*	53.2*	24 1*	53.2*	24 1*			
	190' (57.91 m)	40	12.19	78.9	193'	2"	58.87	40.1*	18 2*	40.1*	18 2*	40.1*	18 2*	40.1*	18 2*	40.1*	18 2*	40.1*	18 2*		
		210' (64.01 m)	50	15.24	77.2	211'	5"	64.45	25.7*	11 7*	25.7*	11 7*	25.7*	11 7*	25.7*	11 7*	25.7*	11 7*	25.7*	11 7*	
			230' (70.10 m)	50	15.24	78.3	231'	11"	70.69	21.0*	9 5*	21.0*	9 5*	21.0*	9 5*	21.0*	9 5*	21.0*	9 5*	21.0*	9 5*

Not applicable

① Capacities shown in thousands of pounds and kilograms.

② Measured vertically from center of boom head sheave to ground.

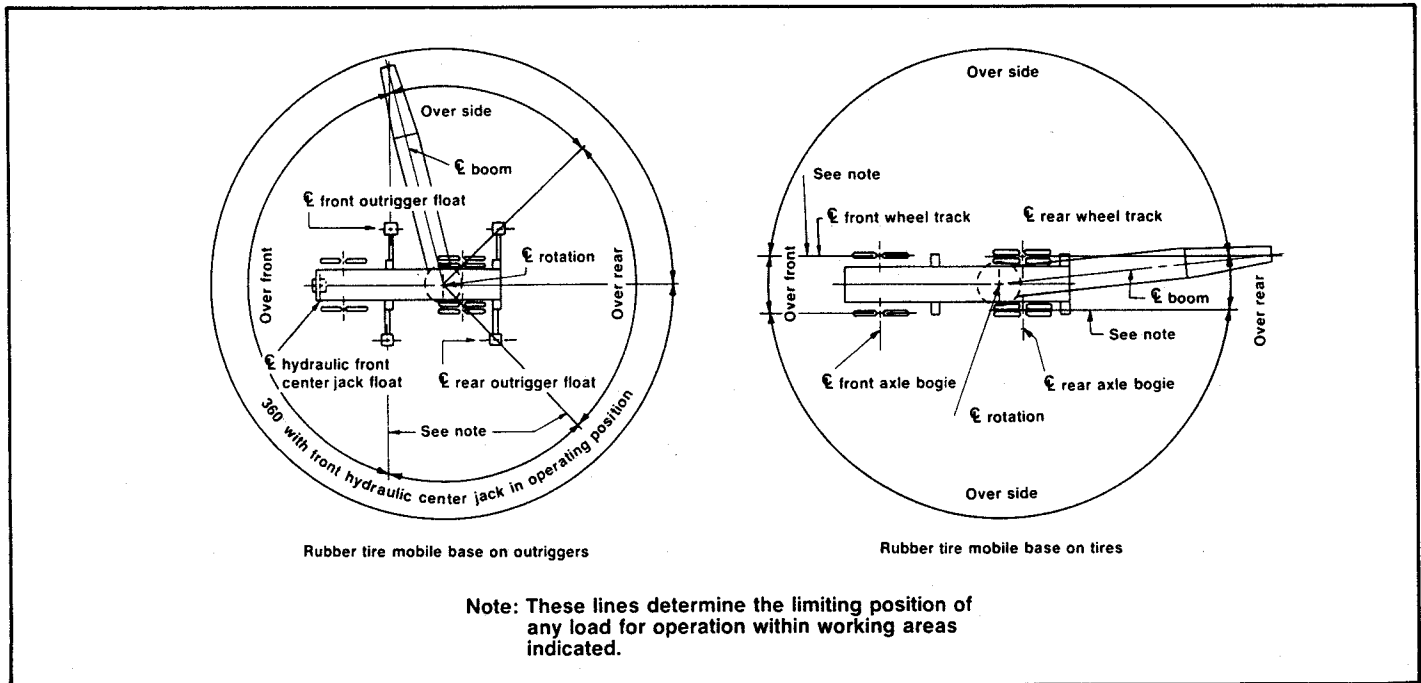
③ Capacities on outriggers for 360° swing applicable only when front center jack and front and rear outrigger are set in proper working position.

HC-238B lifting crane capacities — open throat boom

Notes — lifting crane capacities, tubular boom with open throat top section

1. The capacities included in this chart are the maximum allowable, and are based on machine standing level on firm supporting surface under ideal job conditions. Capacities are based on 85% of minimum tipping loads unless marked with an asterisk (*).
 - a. Asterisk indicates capacities are based on factors other than those which would cause a tipping condition.
2. Capacities are based on freely suspended loads and make no allowance for such factors as the effect of wind, supporting surface conditions, inflation of tires, and operating speeds. Operator must reduce load ratings accordingly to take such conditions into account. Deduction from rated capacities must be made for weight of jib, hook block, ball/hook, sling, spreader bar, or other suspended gear.
3. Boom lengths exceeding 160' (48.77 m) — boom midpoint suspension pendants required.
4. Main boom lengths must not exceed 230' (70.10 m).
5. For lifting 280,000 lbs. (127 005 kg), 10-part load hoist line (1" diameter — 25 mm, Type "N" wire rope) is required. Check parts of line required for all capacities.
6. Jib cannot be used on boom lengths exceeding 200' (60.96 m).
7. Machine equipped with "AB" upper counterweight — do not swing over side until outriggers have been set.
8. Least stable position is over side.
9. Telescopic boom live mast, pinned in the extended (30' — 9.14 m) position, required for all open throat boom capacities.
10. When handling loads on main load hoist line with jib mounting on boom, reduce rated boom capacities as follows to compensate for jib weights —
 - 30' (9.14 m) jib — 2,200 lbs. (998 kg)
 - 40' (12.19 m) jib — 2,540 lbs. (1 152 kg)
 - 50' (15.24 m) jib — 2,870 lbs. (1 302 kg)
 - 60' (18.29 m) jib — 3,200 lbs. (1 452 kg)
11. When making lifts on outriggers, machine must be level and supported on fully extended and set outriggers with tires free of supporting surface.
12. Capacities apply only to the machine as originally manufactured and normally equipped by FMC Corporation Construction Equipment Group.

HC-238B working areas



GENERAL INFORMATION ONLY

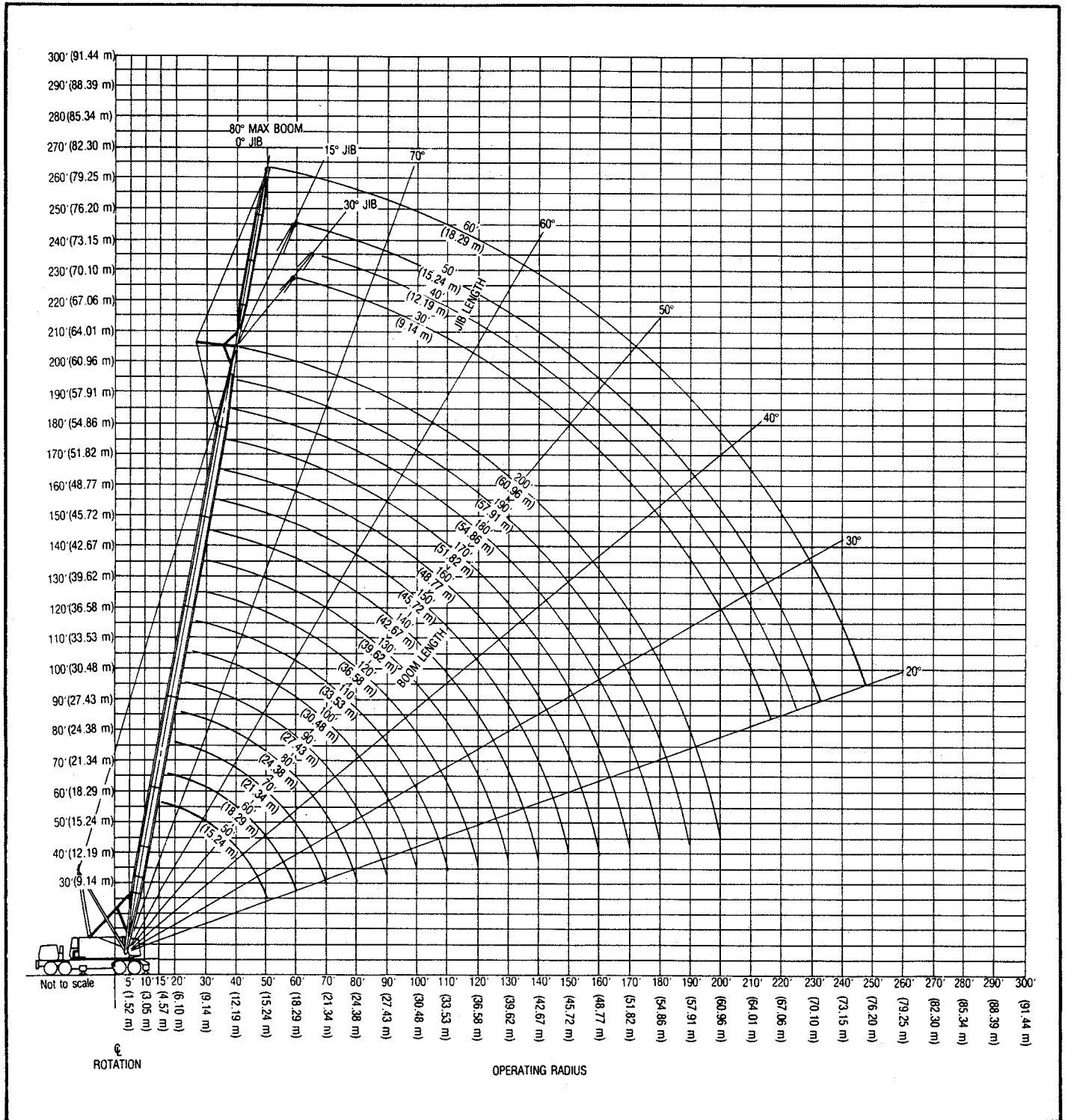
HC-238B boom/jib working ranges — open throat boom

Boom — tubular: 60" (1.52 m) wide, 54" (1.37 m) deep with open throat top section, 1 1/4" (35 mm) boom pendants, boom live mast, and boom midpoint suspension pendants as required.

Jib — tubular: 36" (0.91 m) deep, 30" (0.76 m) wide.

Counterweight — Refer to charts page 1.

Mounting — rubber tire mobile base: FMC, 8 x 4 drive, 270" (6.86 m) wheelbase, 11' 10" (3.61 m) wide.



GENERAL INFORMATION ONLY